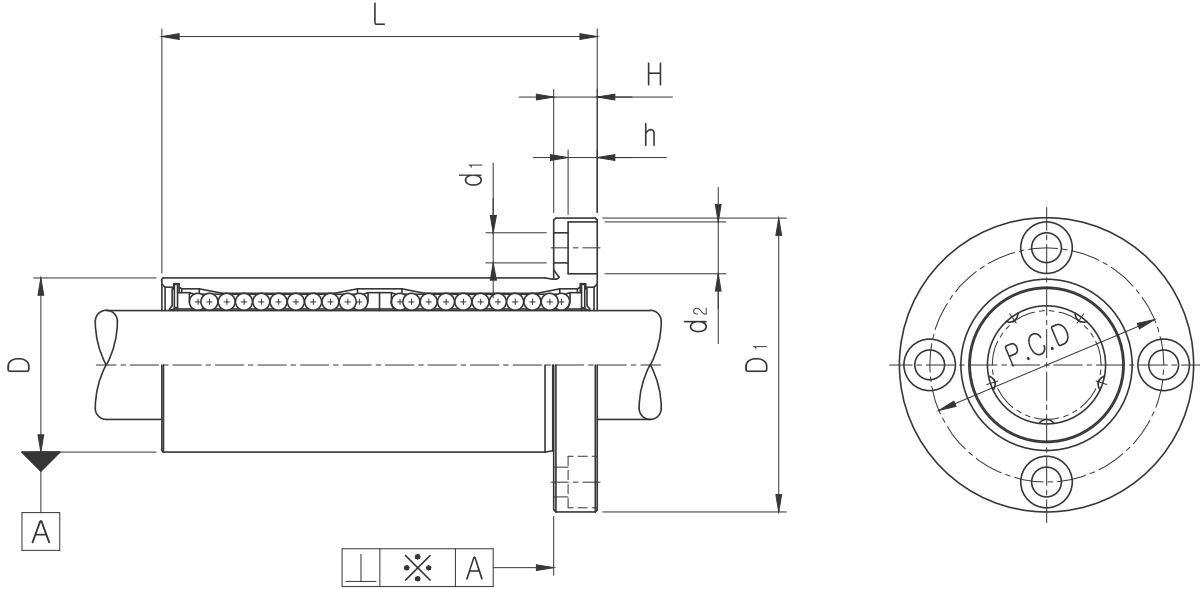


LMF_L FLANGED LONG LINEAR BUSHING

• Drawing



• Part Number Notation

LMF 20 L UU - A N S



- SAMICK Circular Flanged Linear Bushing
- Nominal Shaft Diameter
- Linear Bushing Long Type (for high load)
- Seal

Blank	No Seal
UU	Both Side Seal
U	One Side Seal

- Retainer (material)

Blank	Resin Retainer(Standard)
A	Steel Retainer(High temperature) *1

- Outer-sleeves (by corrosion resistance)

Blank	Standard(SUJ2)
N	Electroless nickel plating
R	Raydent treatment

- Ball type (material)

Blank	High carbon bearing steel ball(Standard)
S	Stainless steel ball

*1 Steel retainer applicable from LMF6L to LMF25L only



LMF_L FLANGED LONG LINEAR BUSHING

PART NUMBER		WORKING BORE DIAMETER		D		L		D ₁		H	PCD	d ₁	d ₂	h	SQUAR ENESS ※(μm)*	BASIC LOAD RATING(N)		NO. OF BALL ROW	WEIGHT (gf) ^{*2}
Resin	Steel	dr. (mm)	CLEAR NCE (mm)	mm	CLEAR NCE (mm)	mm	CLEAR NCE (mm)	mm	CLEAR NCE (mm)						DYNAMIC (C) ^{*1}	STATIC (Co)			
LMF6LUU	LMF6L-A	6	0 -0.010	12	0 -0.013	35	0 -0.3	28	0 -0.2	5	20	3.4	6.5	3.3	15	320	520	4	31
LMF8LUU	LMF8L-A	8		15	45	32		5		24	3.4	6.5	3.3	15	430	780	4	53	
LMF10LUU	LMF10L-A	10		19	55	40		6		29	4.5	8.0	4.4	15	580	1100	4	105	
LMF12LUU	LMF12L-A	12	0 -0.012	21	0 -0.016	57	0 -0.4	42	0 -0.3	6	32	4.5	8.0	4.4	15	650	1200	4	100
LMF13LUU	LMF13L-A	13		23	61	43		6		33	4.5	8.0	4.4	15	810	1570	4	130	
LMF16LUU	LMF16L-A	16		28	70	48		6		38	4.5	8.0	4.4	15	1230	2350	5	187	
LMF20LUU	LMF20L-A	20	0 -0.015	32	0 -0.019	80	0 -0.4	54	0 -0.3	8	43	5.5	9.5	5.4	20	1400	2750	5	260
LMF25LUU	LMF25L-A	25		40		112		62		8	51	5.5	9.5	5.4	20	1560	3140	6	515
LMF30LUU		30		45		123		74		10	60	6.6	11.0	6.5	20	2490	5490	6	655
LMF35LUU		35	0 -0.020	52	0 -0.022	135	0 -0.4	82	0 -0.3	10	67	6.6	11.0	6.5	25	2650	6470	6	970
LMF40LUU		40		60		154		96		13	78	9.0	14.0	8.6	25	3430	8040	6	1560
LMF50LUU		50		80		192		116		13	98	9.0	14.0	8.6	25	6080	15900	6	3500
LMF60LUU		60	90	211	134	18	112	11.0	17.5	10.8	30	7650	20000	6	4500				

- ★1 Dynamic load rating is based on the nominal life of 50km
In case of 100km, C on the table need to be divided by 1.26
Ex) 50km basic dynamic load rating(C) of LMF12L = 650N
100km basic dynamic load rating(C₁₀₀) of LMF12L = 650/1.26 = 515.87N
- ★2 Based on the weight of resin retainer
- ★3 Main unit : mm
- ★4 1N ≒ 0.102kgf

